



宁波协利电子开关

NINGBO XIELI ELECTRONIC SWITCH

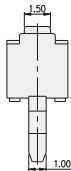
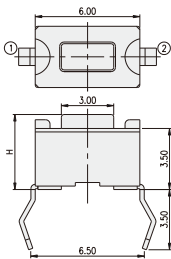
TC轻触开关规格书

Specification of TC flip

使用温度范围 Temperature	-25~+85℃
额定负荷 Rated load	DC 12V 0.1A
接触电阻 Contact Resistance	≤0.03 Ω
绝缘电阻 Insulation Resistance	≥100M Ω
耐压 Withstand Voltage	AC 250V(50HZ)/ Min
动作力 Actuating force	320±80gf
使用寿命 Switching Life	100000次

注：1. 高度L尺寸可按用户要求任意选择； 2. 头部开头分O和□。
 Remark: 1. The length(L) can be set at the full discretion of the consumer.
 2. The head can be shaped either round(like O) or square (like □)

DTS-32S-V



PART NO.	H
DTS-31	4.30
DTS-32	5.00

