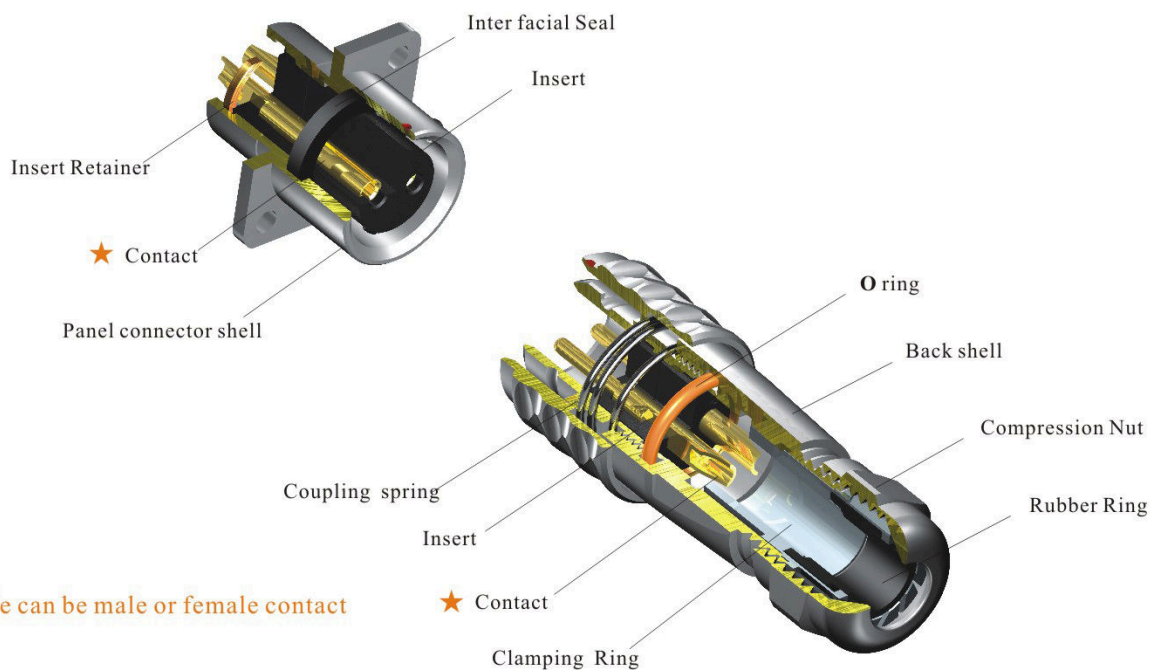


IP67



● SF12 IP67 Push-pull coupling



★ Each side can be male or female contact

Material and spec

Coupling	PUSH-PULL	
Shell material	Brass with chrome plating	
Insert material	PPS max temperature 260 °C	
Contact material	Brass with gold plating	
Termination	Solder	
Cable outer diameter range	I : 4-6.5mm	II : 5-8mm
IP rating	IP67	
Mating cycle	> 500	
Temperature range	-25~+85°C	
Insulation resistance MΩ	2000	

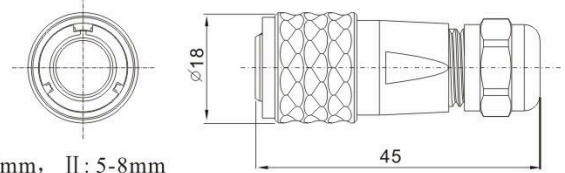
SF12 Series IP67



SF1210 / P — SF1210 / S

Cable connector

Mate with SF1211, SF1212, SF1213



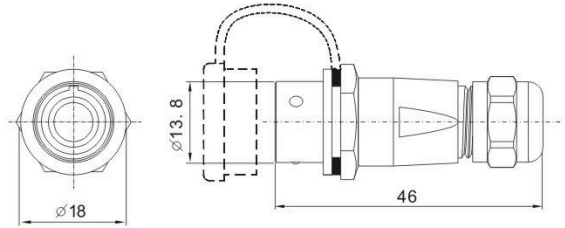
Cable outer diameter: I : 4-6.5mm, II : 5-8mm
Number of contact: 2. 3. 4. 5. 6. 7. 9



SF1211 / P — SF1211 / S

In-line cable connector

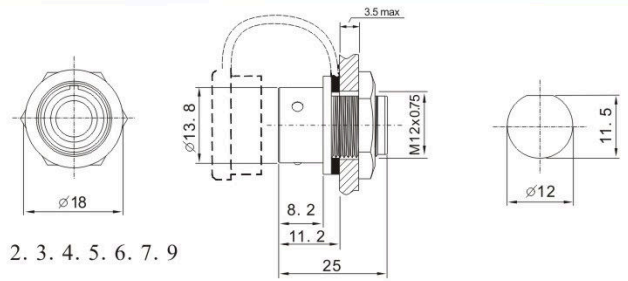
Mate with SF1210



SF1212 / P — SF1212 / S

Rear mount

Mate with SF1210



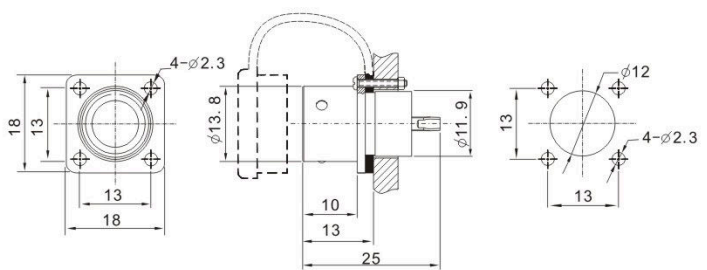
Number of contact: 2. 3. 4. 5. 6. 7. 9



SF1213 / P — SF1213 / S

Square flange

Mate with SF1210



Contact arrangement and spec

Number of contact	2	3	4	5	6	7	9
Male contact face view							
Rated current (A)	13A	13A	5A	5A	5A	5A	3A
Contact diameter	∅ 1.6X2	∅1.6X3	∅ 1X4	∅1X5	∅ 1X6	∅ 1X7	∅ 0.7X9
Rated voltage (AC.V)	250V	250V	200V	180V	125V	125V	125V
Test voltage(AC.V) 1 min	1500V	1500V	1500V	1000V	1000V	1000V	1000V
Contact resistance mΩ	2	2	5	5	5	5	10
Wire size mm ² /AWG	≤2/14	≤2/14	≤0.785/18	≤0.785/18	≤0.785/18	≤0.785/18	≤0.785/18